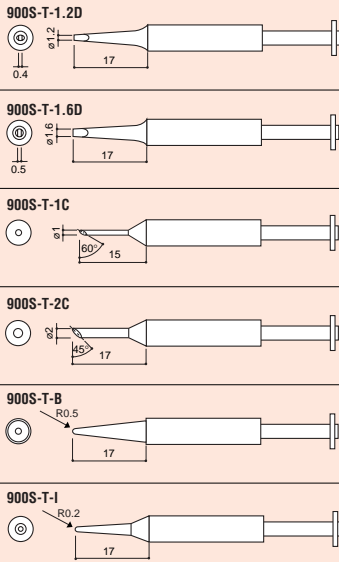


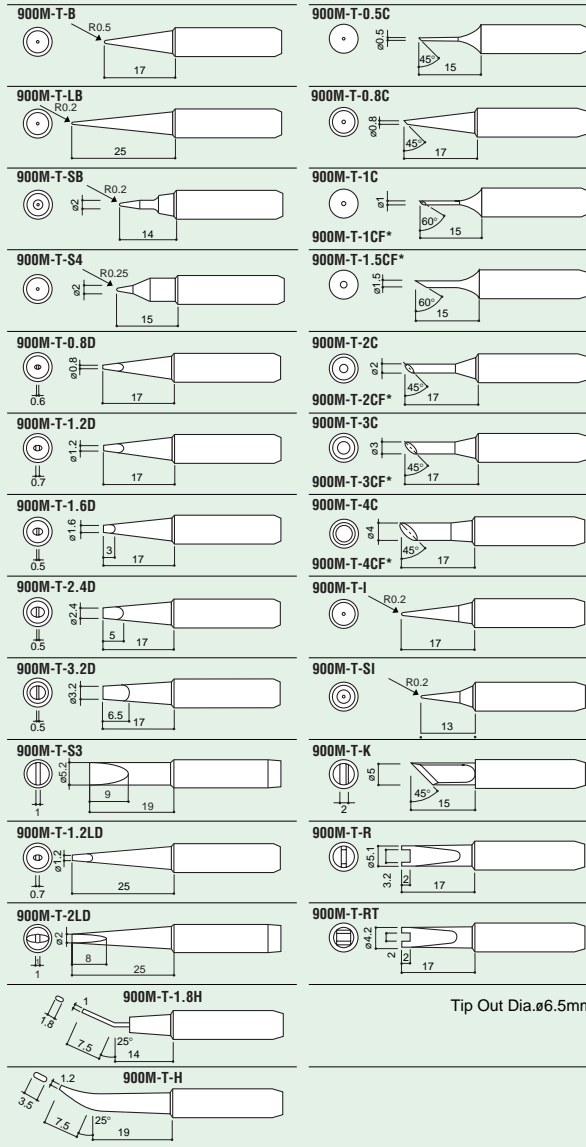
**Replacement Tips**

**Small**  
For 900S, 900S-ESD



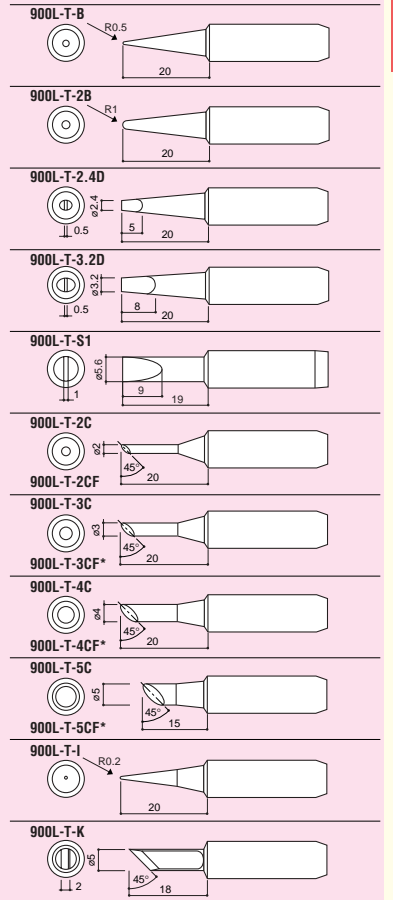
Tip Out Dia.  $\phi$ 5.8mm

**Medium**  
For 900M, 900M-ESD, 907, 907-ESD



Tip Out Dia.  $\phi$ 6.5mm

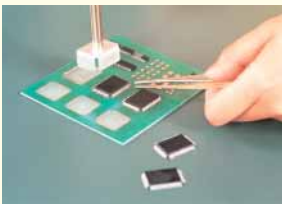
**Large**  
For 900L, 900L-ESD, 908, 908-ESD



Tip Out Dia.  $\phi$ 8.5mm

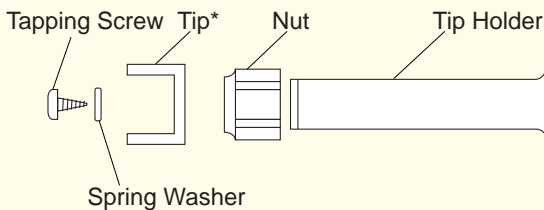
\*These tips are tinned on the soldering surface only.

**For SMD Desoldering**



907	907 ESD	900M	900M ESD
+			
Tip Holder(No.900M-1000)			
+			
Tip			

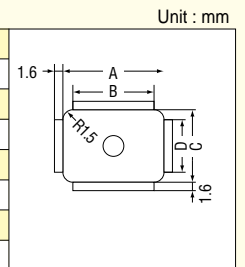
**No.900M-1000**



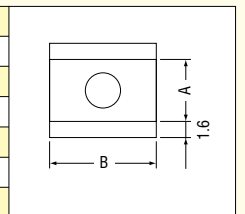
\*Tip is not included.

**Optional Tips**

Part No.	Tip Size			
	A	B	C	D
924-T-1002	12.5	9.5	12.5	9.5
924-T-1003	15.5	12.5	15.5	12.5
924-T-1004	16.3	13.3	16.3	13.3
924-T-1005	17.0	14.0	17.0	14.0
924-T-1006	23.0	20.0	17.0	14.0
924-T-1007	20.0	17.0	20.0	17.0



Part No.	Tip Size	
	A	B
924-T-1010	6.0	5.0
924-T-1011	6.0	10.0
924-T-1012	7.0	12.5
924-T-1013	9.0	15.2
924-T-1014	9.0	18.0



Part No.	Type
924-T-1020	Spatula 9.5

